

**CHRISTIAN SOCIAL SERVICES COMMISSION (CSSC)
NORTHERN ZONE JOINT EXAMINATIONS SYNDICATE (NZ-JES)**



FORM FOURPRE – NATIONAL EXAMINATION 2025

033/2B

**BIOLOGY 2B
(ALTERNATIVE B PRACTICAL)
MARKING SCHEME**

ANSWER

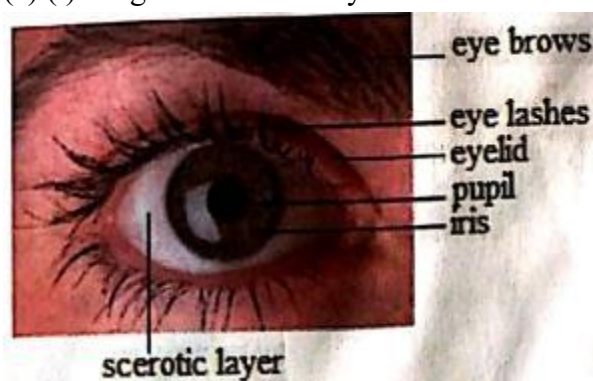
(a) Eyes, Nose, Tongue, Skin and ears- **1@5=5marks**

(b) Stimulus and response of each sense organ.

Sense organ	Stimulus	Response
Eyes	Object	Seeing
Ear	Sound	Hearing
Tongue	Food	Tasting
Skin	Touch	Feeling
Nose	Smell	Smelling

10@ 0.5=05 marks

(c) (i) Diagram of human eye



drawing-01 mark ,label – 6@0.5=03marks,caption =1

(ii) Function of each structure.

Structure	Function
Eye brows	Prevents dusts and sweat from entering the eye
Eye lashes	Prevents dusts and sweat from entering the eye
Eye lids	Clean the eye through blinking
Sclerotic	Protects the eye

Iris	Regulates the size of pupil and hence the amount of light entering the eye
Pupil	Allows light into the retina.

06 @01=6 marks

(d) (i) Movement of the eye is controlled by small muscles called oblique and rectus attached to sclera. 2@1 =2marks

(ii) Importance of the eyes movement is;

- To maximize human vision
- Enable the eye to focus on the same points simultaneously.

2@1=2 marks

2. (a) 1@= 5 marks

Specimen	Common Name
D1	Hibiscus Leaf
D2	Tilapia Fish
D3	House Fly
D4	Millipede
D5	Bread Mould/Rhizopus

(b) 1@ =6marks

Specimen	kingdom	phylum
D1	Plantae	Angiospermatophyta
D2	Animalia	Chordata
D3	Animalia	Arthropoda

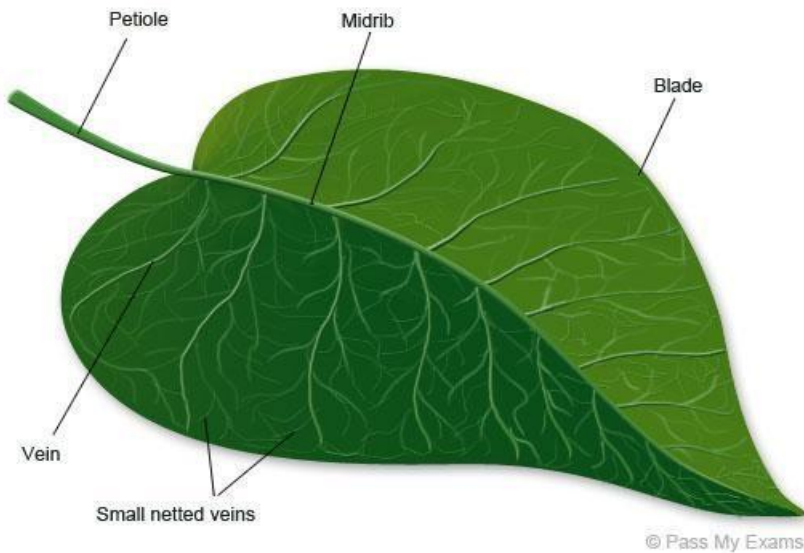
C . Cholera, Trachoma, Typhoidany two 2marks

d

- ☐ .They have gills for gaseous exchange
- ☐ .They have (paired pelvic and pectoral) fins for swimming
- ☐ .They have cycloid scales which point backwards to avoid friction when moving in water
- ☐ .They have streamlined body
- ☐ .They have lateral line for detection
- ☐ .They have swim bladder that is filled with air to regulate buoyancy

Any 3 @1= 3 marks

E
drawing 1
label 5
caption 1



Structure of specimen D1 showing a part moved in photosynthesis

f. Economic importance of D5

- ☐ .Spoil food substances
- ☐ .Used as food e.g. edible mushroom
- ☐ .Used in production of alcohol e.g. yeast
- ☐ .Used in production of medicine e.g. penicillin from penicillium

ANY 2 .2 MARKS